



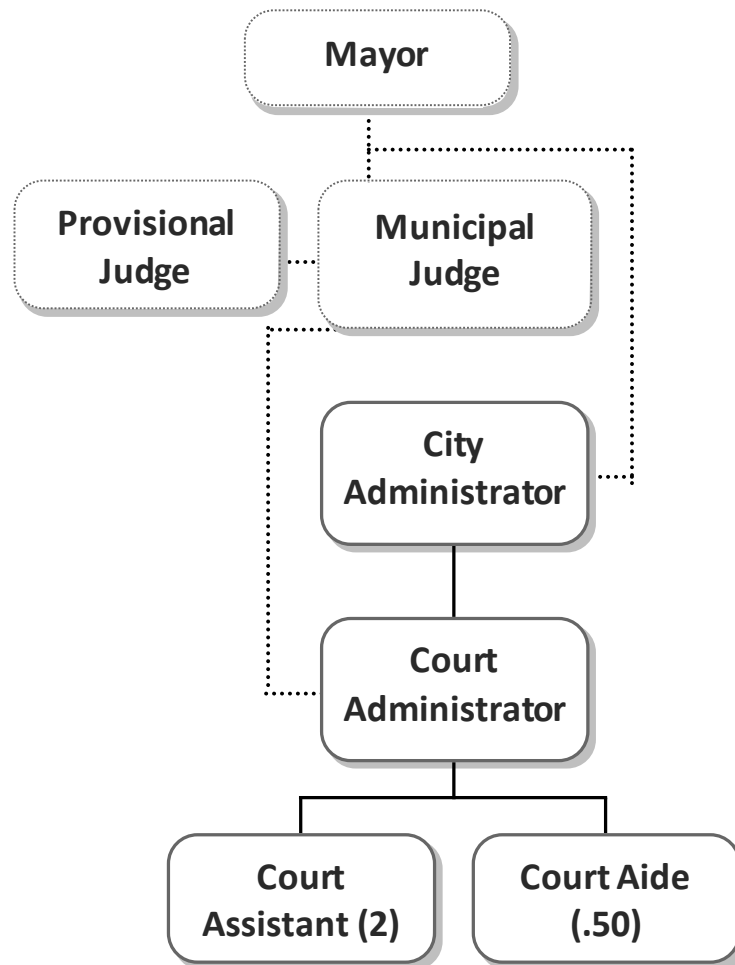
Municipal Court

Municipal Court

Department Summary

| <u>Program</u> | <u>General Fund</u> | <u>Total</u> |
|-----------------|---------------------|------------------|
| Municipal Court | 358,026 | 358,026 |
| Total | \$358,026 | \$358,026 |

Organization Chart



Municipal Court

| | | | | |
|-------------------|------------|-----------------|------------|------------------------|
| Department | No. | Program | No. | Program Manager |
| Municipal Court | 70 | Municipal Court | 001 | Municipal Judge |

Program Activities

Municipal Court

The court is the judicial branch of city government. The Judge is appointed to a four-year term by the Mayor with the consent of the City Council. Traffic violations and other ordinance violations are tried by the court. The Judge serves on a part-time basis.

Violations Bureau

To provide for the efficient collection of fines and costs assessed by the Municipal Court, the court has established the Violations Bureau. The Court Administrator operates this bureau and administers the day-to-day records management functions of the court.

| Performance Measures | | | | |
|-------------------------------------|--------------------|--------------------|----------------------|-----------------------|
| Metrics | 2018 Actual | 2019 Actual | 2020 Estimate | 2021 Projected |
| New cases opened: | 16,295 | 8,333 | 4,800 | 8,000 |
| Traffic tickets | 9,426 | 5,808 | 3,400 | 4,500 |
| Complaints - non-traffic | 2,340 | 1,988 | 1,350 | 2,000 |
| Code enforcement cases | 18 | 16 | 12 | 20 |
| Parking | 125 | 139 | 75 | 100 |
| Court settings | 70 | 72 | 58 | 72 |
| Cases docketed for court appearance | 38,191 | 34,148 | 17,000 | 22,000 |
| Warrants Issued | 4,000 | 3,190 | 1,400 | 2,000 |
| DWI cases | 95 | 350 | 225 | 275 |



Annual Budget -2021

General Fund

| DEPARTMENT Municipal Court | NUMBER 70 | PROGRAM Municipal Court | NUMBER 001 |
|---|---------------------|-----------------------------------|----------------------|
| Program Budget | | | |
| Object of Expenditure | 2019 Budget | 2020 Budget | 2021 Budget |
| PERSONNEL SERVICES | 315,789 | 324,745 | 325,301 |
| CONTRACTUAL SERVICES | 32,040 | 43,550 | 32,725 |
| TOTAL EXPENDITURES | 347,829 | 368,295 | 358,026 |
| Personnel Schedule | | | |
| Position | 2019 | 2020 | 2021 |
| MUNICIPAL JUDGE | 0.20 | 0.20 | 0.20 |
| PROVISIONAL MUNICIPAL JUDGE | 0.10 | 0.10 | 0.10 |
| COURT ADMINISTRATOR | 1.00 | 1.00 | 1.00 |
| COURT ASSISTANT | 3.00 | 2.00 | 2.00 |
| COURT AIDE | 0.50 | 0.50 | 0.50 |
| EMPLOYEES - FULL TIME EQUIVALENTS (FTE) | 4.80 | 3.80 | 3.80 |



Annual Budget -2021

General Fund

| DEPARTMENT Municipal Court | | NUMBER 70 | PROGRAM Municipal Court | | NUMBER 001 |
|--------------------------------------|---------------------|----------------------------|-----------------------------------|------------------------------|--|
| Personnel Services | | 2019 Budget (Actual) | 2020 Budget (Amended) | 2021 Budget (Proposed) | Detail |
| Account Number | Account Description | | | | |
| 710.00 | SALARIES | 238,041 | 242,641 | 245,925 | Regular 185,041 Part-time 53,200 Overtime 2,000 Longevity pay 5,684 |
| 711.00 | BENEFITS | 77,748 | 82,104 | 79,376 | FICA 18,810 Workers' compensation 660 Health insurance 33,080 Life & Disability insurance 1,849 Dental insurance 1,080 Pension 23,897 |
| TOTALS | | 315,789 | 324,745 | 325,301 | |



Annual Budget -2021

General Fund

| DEPARTMENT Municipal Court | | NUMBER 70 | PROGRAM Municipal Court | | | NUMBER 001 |
|--------------------------------------|-----------------------------|-------------------------------------|--------------------------------------|---------------------------------------|--------------------------------------|----------------------|
| Contractual Services | | 2019 Budget (Actual) | 2020 Budget (Amended) | 2021 Budget (Proposed) | Detail | |
| Account Number | Account Description | | | | | |
| 720.11 | MISC. CONTRACTUAL | 3,870 | 1,500 | 1,000 | Prisoner incarceration | 1,000 |
| 720.12 | PROFESSIONAL SERVICES | 78 | 10,300 | 3,300 | Interpreters | 300 |
| | | | | | Attorney for indigent offenders | 3,000 |
| 720.25 | DATA PROCESSING | 16,611 | 16,500 | 19,500 | ITI court program subscription | 19,500 |
| 720.26 | PRINTING & BINDING | 1,989 | 4,500 | 3,000 | Court backing sheets, court forms | 3,000 |
| 720.34 | CREDIT CARD PROCESSING FEES | 4,648 | 4,000 | 5,000 | Credit Card Processing Fees | 5,000 |
| 720.51 | PROFESSIONAL DEVELOPMENT | 4,844 | 6,750 | 925 | See professional development request | 925 |
| | TOTALS | 32,040 | 43,550 | 32,725 | | |



| DEPARTMENT Municipal Court | NUMBER 70 | PROGRAM Municipal Court | NUMBER 001 |
|---|---------------------|-----------------------------------|---|
| Professional Development Request | | | |
| Organization/Conference | Location | Amount | Detail |
| MEETINGS & SEMINARS | Local | 500 | Local association training meetings (3) |
| MO ASSOC FOR COURT ADMIN | | 150 | Membership dues (3) |
| NATIONAL ASSOC FOR COURT ADMIN | | 125 | Membership dues (1) |
| ST LOUIS ASSOC. OF COURT ADMIN | | 150 | Membership dues (3) |
| | | 925 | |
| | TOTAL REQUEST | | |

This page left intentionally blank.

